

Grasso FX PP 2x1100 /sDuo

Specifications

Brand	Grasso
Type	FX PP 2x1100 /sDuo
Product type	Water Cooled Chiller
Capacity kW	2054
Capacity Tons	584,0
Refrigerant	NH 3 (ammonia)
Refrigerant Type	R 717
Weight in kg.	13.400
Sizes	4500x2450x2200 mm 3600x1900x2000 mm
Compressor(s) type & model	2x Grasso R-2
Remarks	y.o.b. 2000

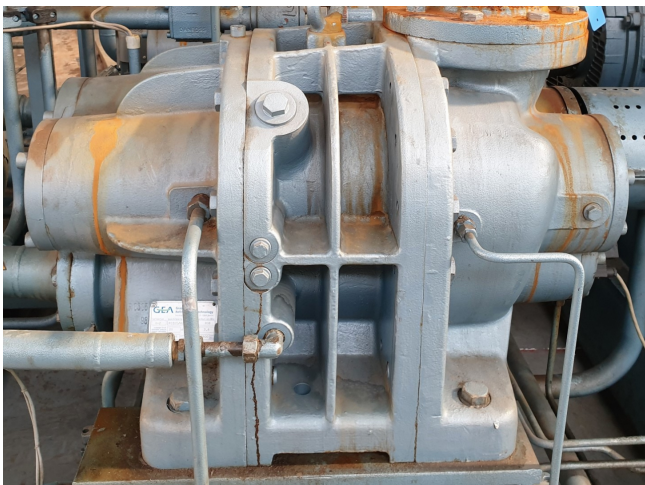


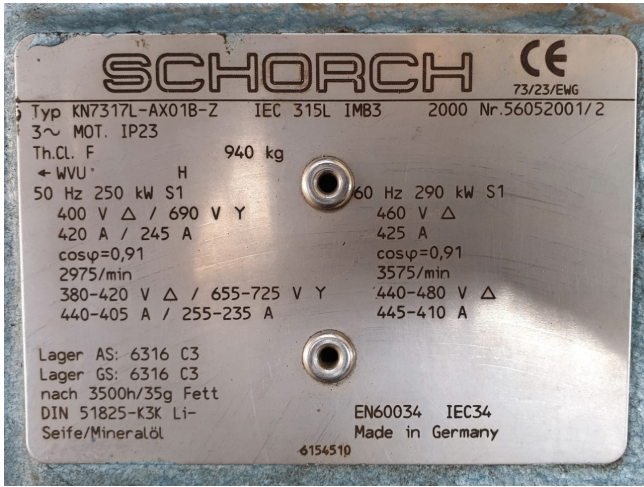
Description

Used Grasso FX PP 2x1100 /sDuo

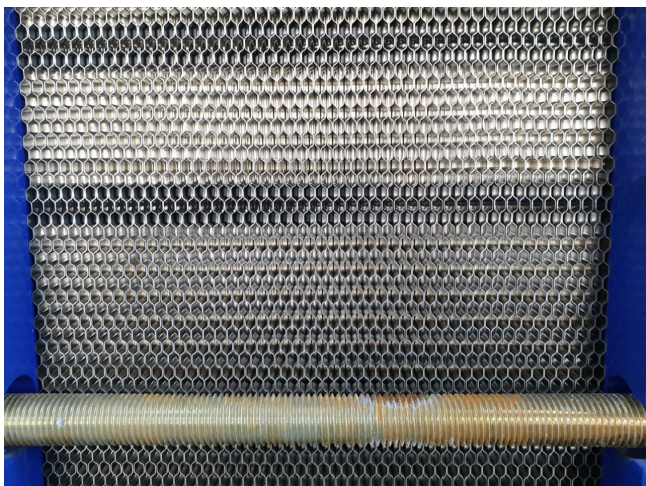
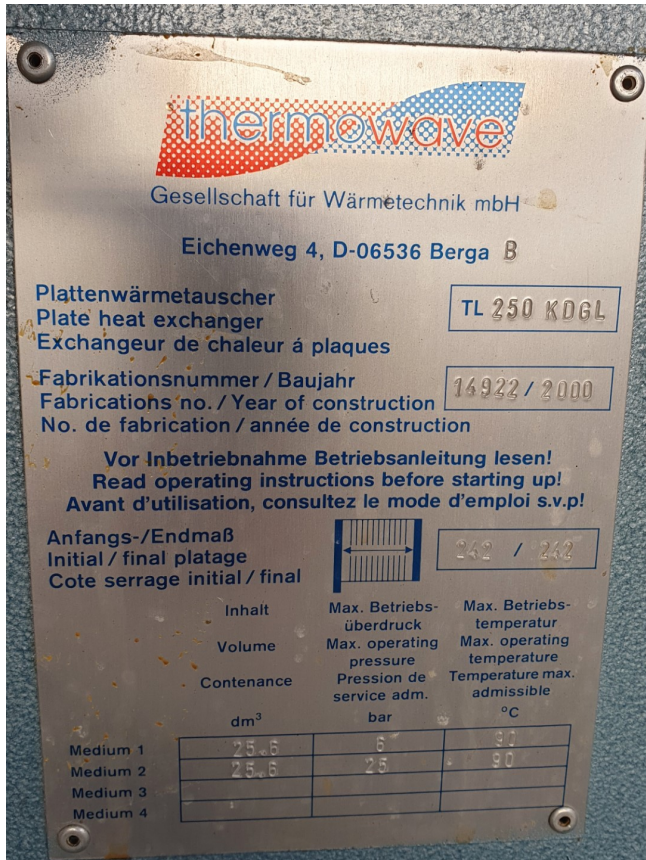
Used GEA/Grasso FX PP 2x1100 /sDuo chiller containing the following elements: (2x) Grasso R-2 screw compressor, (2x) Schorch electromotor 50 Hz - 250 kW - 2975 RPM. Oil separator 575 ltr. Thermowave TL 250 KDGL PHE oil cooler. Control panel with GEA GSC controlling. Evaporator GEA LWC 150 S B-16, condenser Thermowave TL 650 KDIL.

*All components of this used chiller will be tested on good working, leak free condition (condensing blocks), compressors, fans, control panel, etcetera). Choosing HOSBV means buying with warranty. We perform an industrial cleaning and rust spots will be covered. Also, we can arrange your shipment















Gesellschaft für Wärmetechnik mbH

Eichenweg 4, D-06536 Berga A.P.

Plattenwärmetauscher
Plate heat exchanger
Exchangeur de chaleur à plaques

TL 650 KD1L

Fabrikationsnummer / Baujahr
Fabrications no. / Year of construction
No. de fabrication / année de construction

14920 / 2000

Vor Inbetriebnahme Betriebsanleitung lesen!
Read operating instructions before starting up!
Avant d'utilisation, consultez le mode d'emploi s.v.p!

Anfangs-/Endmaß
Initial / final platage
Cote serrage initial / final



710 / 707

	Inhalt Volume Contenance dm ³	Max. Betriebs- überdruck Max. operating pressure Pression de service adm. bar	Max. Betriebs- temperatur Max. operating temperature Temperature max. admissible °C
Medium 1	144,9	6,0	80,0
Medium 2	144,9	25,0	80,0
Medium 3			
Medium 4			